



Harkness Screens UK
Tel +44 (0) 1438 725200
Fax +44 (0) 1438 344400

E-Mail sales@harkness-screens.com
www.harkness-screens.com

Harkness Screens USA
Tel +1 (540) 370 1590
Fax +1 (540) 370 1592

**ELECTRIC ROLLER SCREEN
MAJOR
PRODUCT DATA SHEET**

Document Ref DS-055 Issue 4 Apr 2010

The Major is an electrically operated roller screen, incorporating a specially designed motor to provide smooth, reliable and virtually silent operation for wall, ceiling or specialised mounting. M1 7201-96 certification.

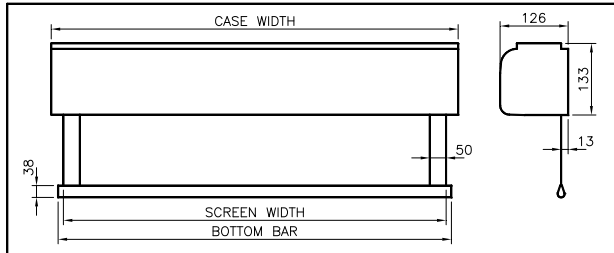
Application

Typical applications include:

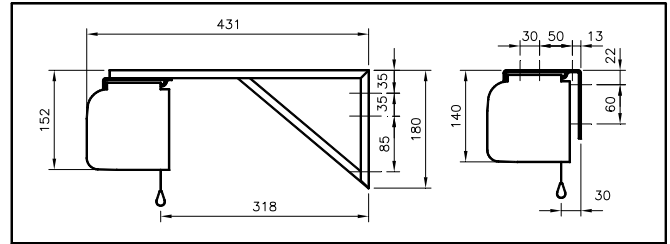
- Conference centres
- Presentation suites
- Boardrooms
- Lecture theatres
- Educational establishments

General Dimensions – not to scale

All dimensions are in mm



View of Roller Screen



Typical Mounting Brackets

Stock Code	MAJ 350/265	MAJ 350/350	MAJ 400/300	MAJ 400/400	MAJ 450/340
Viewing Area (w x h)	350 x 265cm (11.5 x 8.6ft)	350 x 350cm (11.5 x 11.5ft)	400 x 300cm (13.2 x 9.9ft)	400 x 400cm (13.2 x 13.2ft)	450 x 340cm (14.6 x 11.2ft)
Screen Width*	360cm (11.8ft)	360cm (11.8ft)	410cm (13.45ft)	410cm (13.45ft)	460cm (15.1ft)
Screen Height	265cm (8.7ft)	350cm (11.5ft)	300cm (9.9ft)	400cm (13.2ft)	340cm (11.2ft)
Case	371cm (146ins)	371cm (146ins)	421cm (166ins)	421cm (166ins)	471cm (185ins)
Bottom bar	368cm (145ins)	368cm (145ins)	418cm (165ins)	418cm (165ins)	468cm (184ins)
Weight (Approx)	30kg (66lb)	30kg (66lb)	33kg (73lb)	33kg (73lb)	36kg (79lb)

*SCREEN WIDTH is PICTURE WIDTH plus black edge masking of 50mm (2") both sides. Horizontal seam required when screen height dimension exceeds 244cm (8')

General Detail

Construction

Heavy gauge aluminium case. Epoxy powder coated white (RAL 9010 – 75% gloss)
Self-lubricating motor in roller with thermal cutout, integral gearbox and capacitor
Ø90mm (3.5") aluminium tube screen roller mounted on two vibration and noise absorbing supports

Mounting

Ceiling – bracket or suspended
Wall - bracket
Pipe / fly bar supports

Screen Surface

Maximum size 1:1 format) 4000mm (13' 2") x 4000mm (13' 2")
Maximum size 4:3 format) 4500mm (14' 6") x 3400mm (11' 2")
Matt White – gain 1.0
Black edge masking - 50mm s(2") sides
Flame retardant classification M1 7201-96

Surface Size

Viewing area plus black masking borders

Operating

Mains cable (right-hand side entry) when viewed from the front
Power supply : 230V 50hZ
Standard rating : 3 amps
Consumption : 90W
Speed : 17rpm – 80mm/3.15" per sec.
Control station: on/off, up/down, wall mounted

Special Options

Rear projection optional (no black border)

Accessories

Remote/radio control – stock code RRC (screen modifications required).
Low voltage interface (LVI) 12v constant from mini-phono plug on projector.
False ceiling mounting kit – consisting of 2 x screen case brackets and 4 x 1 metre suspension rods.

NOTE:

Comprehensive installation instructions accompany screen.
Electrical connections should be completed by an appropriately qualified person.

In the interest of product enhancement, Harkness Screens reserves the right to introduce modifications or alterations without notice