



Harkness Screens UK
Tel +44 (0) 1438 725200
Fax +44 (0) 1438 344400

E-Mail sales@harkness-screens.com
www.harkness-screens.com

Harkness Screens USA
Tel +1 (540) 370 1590
Fax +1 (540) 370 1592

**ELECTRIC ROLLER SCREEN
HOME-VIEW TENSION
PRODUCT DATA SHEET**

Document Ref DS-052 Issue 4 Oct 2007

The Home-View is an electrically operated roller screen, incorporating a specially designed motor for smooth, quiet operation. The screen surface incorporates a tab guide cable system to maintain an even horizontal tension to hold the surface perfectly flat.

Application

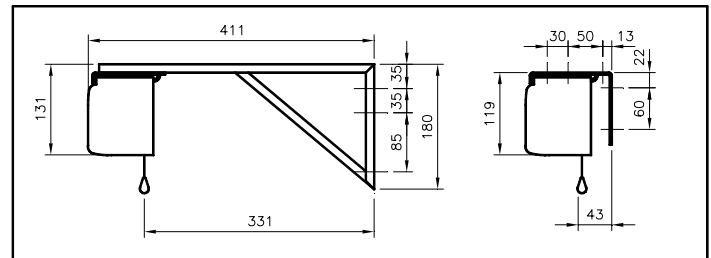
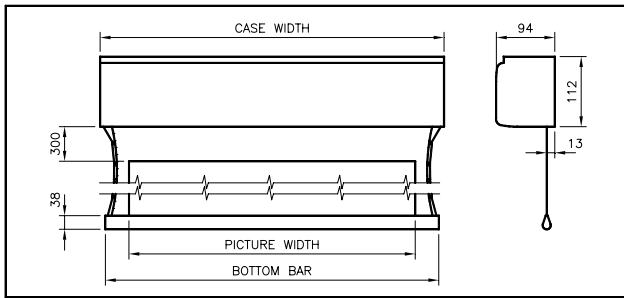
Typical applications include:

- Home cinema
- Conference centres
- Presentation suites
- Lecture theatres
- Educational establishments
- Boardrooms

GENERAL DIMENSIONS – NOT TO SCALE

All dimensions are in mm

Fixing Bracket Options



Stock Code	HVVF 160/120T	HVVF 180/135T	HVVF 200/150T	HVVF 250/190T	HVVF 300/225T	HVVF 350/265T
Format	4:3	4:3	4:3	4:3	4:3	4:3
Viewing area (w x h)	160x120cm	180x135cm	200x150cm	250x190cm	300x 225cm	350x265cm
Screen width*	170cm	190cm	210cm	260cm	310cm	360cm
Screen height	153.8cm	168.8cm	183.8cm	223.8cm	258.8cm	278.8cm
Case width	198cm	218cm	238cm	289cm	339cm	389cm
Bottom bar	192cm	212cm	232cm	280cm	330cm	380cm
Net Weight	17kg	18kg	19kg	21kg	30kg	36kg

Stock Code	HVHD 160/90T	HVHD 180/101T	HVHD 200/112T	HVHD 250/140T	HVHD 300/169T	HVHD 350/197T	HVHD 400/225T
Format	16:9	16:9	16:9	16:9	16:9	16:9	16:9
Viewing area (w x h)	160x90cm	180x101cm	200x112cm	250x140cm	300x169cm	350x197cm	400x225cm
Screen width*	170cm	190cm	210cm	260cm	310cm	360cm	410cm
Screen height	123.8cm	134.8cm	145.8cm	173.8cm	202.8cm	230.8cm	258.8cm
Case width	198cm	218cm	238cm	288cm	339cm	389cm	439cm
Bottom bar	192cm	212cm	232cm	282cm	330cm	380cm	430cm
Net Weight	17kg	18kg	19kg	20kg	30kg	33kg	36kg

*SCREEN WIDTH is PICTURE WIDTH plus black edge masking of 50mm (2") both sides. Horizontal seam required when screen height dimension exceeds 244cm (8ft)

General Detail

Construction

Aluminium casing. Epoxy powder coated white (RAL 9010 – 75% gloss)
Self-lubricating motor with thermal cutout, integral capacitor, gearbox and limit switches
Ø70mm (2.75") aluminium tube screen roller mounted on two vibration and noise absorbing supports

Mounting

Adjustable mounting systems using extension brackets; designed for single use
Ceiling – direct, bracket or suspended
Wall – direct or bracket

Screen Surface

Pipe / fly bar supports
Matt White – gain 1.0
Flame retardant M1 7201-96
30cm top and 5cm side; 3.8cm bottom black bar

Operating

Mains cable (right-hand side entry) when viewed from the front
Power supply : 230V 50hZ
Standard rating : 3 amps
Consumption : 90W
Speed : 17rpm – 135mm/5.3" per sec.
Preset, adjustable upper and lower limit switches
Control station : up/down, wall mounted

Special options

Integrated system control

Accessories

False ceiling mounting kit – consisting of 2 x screen case brackets and 4 x 1 metre suspension rods; trim kit up to 300 x 225cm.
Black case up to 2.5m wide.

NOTE:

Remote/radio control – stock code RRC (screen modifications required); low voltage interface 12V DC.
Comprehensive installation instructions accompany screen.
Electrical connections should be completed by an appropriately qualified person.

In the interest of product enhancement, Harkness Screens reserves the right to introduce modifications or alterations without notice